

# **norwood grand**

*Homes with modern designs brought to you  
by professional and experienced architects*

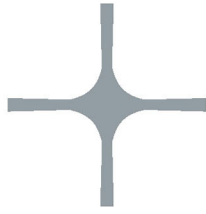
**Huttons**

SINGAPORE'S LARGEST  
PRIVATE REAL ESTATE AGENCY

*Seeking Indication Of Interest*



# Norwood Grand



A sanctuary to call your own, where peace, comfort and joy are always within reach.



Artist's Impression



Artist's Impression

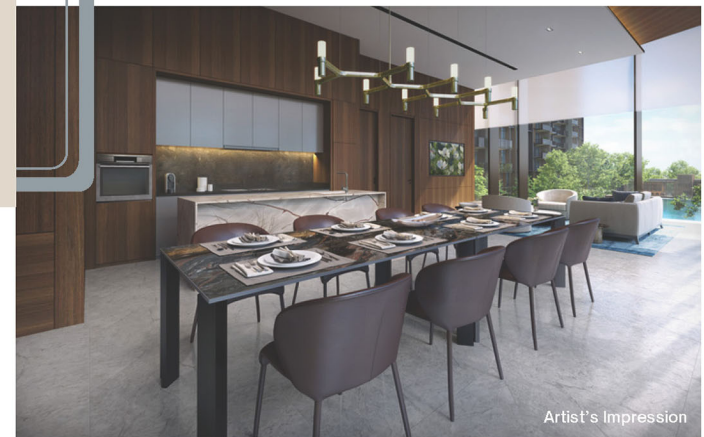


Artist's Impression

Norwood Grand consists of 348 units, 4 blocks of 11 storey homes with 99 years lease and an onsite childcare centre. There is one level of basement carpark, a landscape deck with swimming pool and communal facilities.

## About us

Norwood Grand is a new development By City Developments Limited (CDL) located in District 25, The Woodlands Regional Centre, Champions Way. A brand new sought after Condominium that is next to the Woodlands South MRT Station, part of the Thomson East Coast Line that is 1 Stop away (Woodlands North MRT Station from the upcoming Johor Bahru-Singapore Rapid Transit System (RTS) Link



Artist's Impression



# NORWOOD GRAND

Developed By CDL, City Developments Limited (CDL), a leading global real estate company with a network spanning 163 locations in 29 countries and regions.



## MODERN DESIGN

## CDL PROPERTIES

☀ LUXURIOUS LIFESTYLE ○



Proven track record of 60 years in real estate development, investment and management, the Group has developed over 50,000 homes.



MALAYSIA  
JOHOR BAHRU

JOHOR BAHRU  
CENTRE  
(FUTURE)

INDUSTRIAL  
DEVELOPMENTS

# LOCATION

A NATURE-INSPIRED ZONE

Norwood Grand, a premier development located at the address of Champions Way, next to Woodlands South MRT station, just one station away from Woodlands Regional Centre and two stations away from the Johor Bahru-Singapore Rapid Transit System (RTS) Link, and Woodlands North Coast, a unique mixed-use waterfront destination.

It is in a unique area which is next to the Singapore Sports School and Woodlands Health Campus.

The development is also close to the North Nature zone which includes Singapore Zoo, Night Safari, Mandai Mangrove and Mudflat Nature Park, and Sungei Khatib Bongsu.

## Urban Transformation : The Woodlands Regional centre

Woodlands Regional Centre is poised to take its place as the largest economic hub in Singapore's North region.

**norwood grand**



LEGEND

- North-South Line
- Future North-South Expressway
- Existing Industrial Developments
- Schools
- Eateries
- Thomson Line
- Park Connector
- Proposed Industrial Developments
- Shopping Centres
- Parks
- Woodlands Regional Hub
- Markets

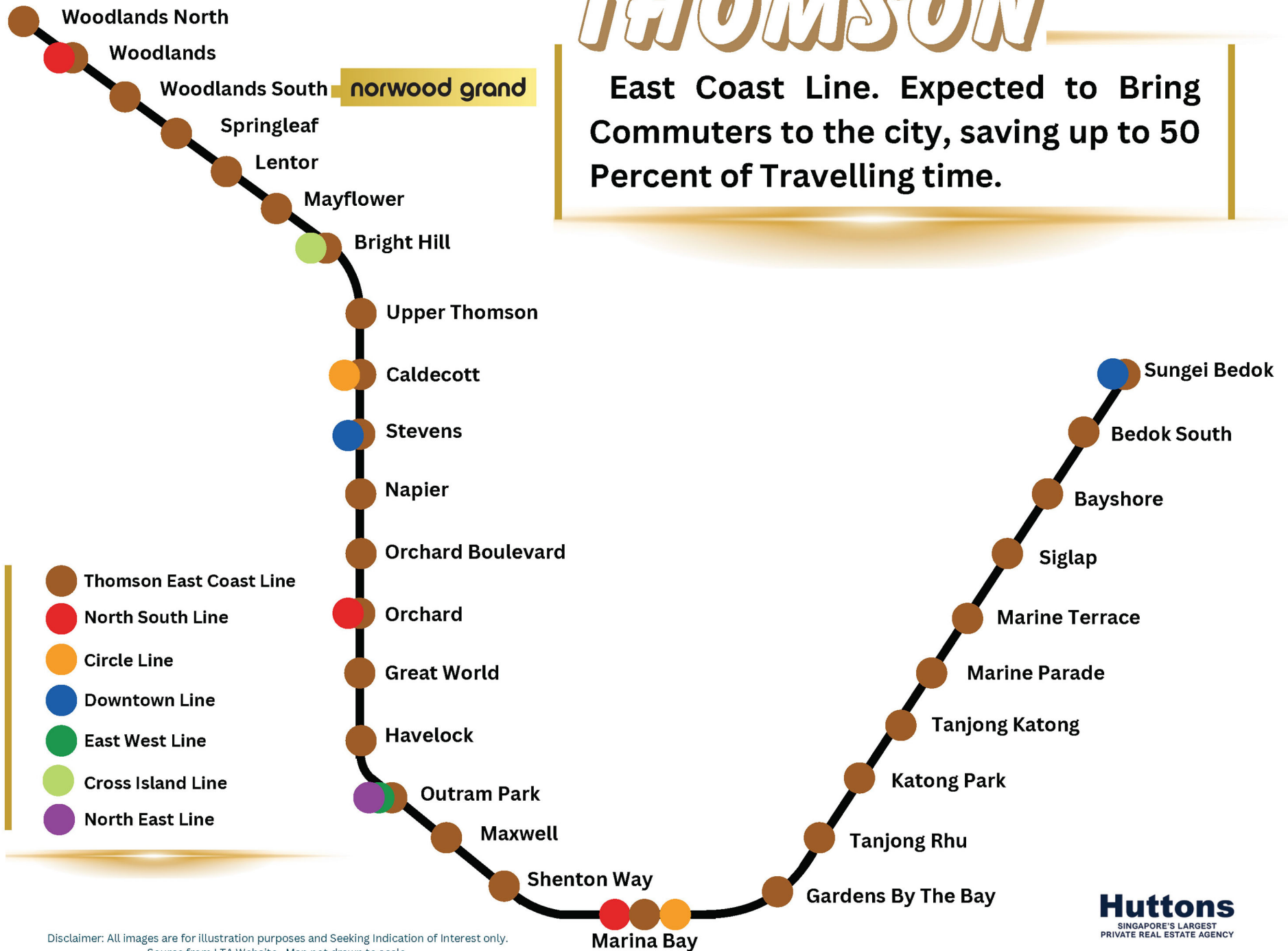
**Huttons**  
SINGAPORE'S LARGEST  
PRIVATE REAL ESTATE AGENCY

Disclaimer: All images are for illustration purposes and Seeking Indication of Interest only.



# THOMSON

East Coast Line. Expected to Bring Commuters to the city, saving up to 50 Percent of Travelling time.



Disclaimer: All images are for illustration purposes and Seeking Indication of Interest only.  
Source from LTA Website . Map not drawn to scale

**Huttons**  
SINGAPORE'S LARGEST  
PRIVATE REAL ESTATE AGENCY



# THOMSON EAST COAST LINE

## From Norwood Grand



2  
Stops to  
North  
Coast &  
RTS



1  
Stop to  
Woodlands  
Regional  
Centre



# Modern Living

10  
Stops to  
Orchard  
Shopping  
Belt



Direct MRT  
to Marina Bay  
Financial  
District and  
Gardens By  
The Bay



1 Stop to Woodlands Integrated Transport Hub, Woods Square with Grade A offices, Causeway Point Shopping Mall and 2 stops to enjoy the convenience to Woodlands North Business District, Woodlands Waterfront Park and RTS (Rapid Transit System) to Johor Shopping Belt.

Disclaimer: All images are for illustration purposes and Seeking Indication of Interest only.

**Huttons**  
SINGAPORE'S LARGEST  
PRIVATE REAL ESTATE AGENCY





Source: The Straits Times

## ABOUT MEDICAL HUB

Singapore's newest integrated Heal Campus where both acute and community hospitals were built together and share the same building. The 7.7ha Woodlands Health Campus facility is located at Woodlands Drive 17 just 300m away from Norwood Grand, plans to create an ecosystem to support for 600,000 of residents for the North region. It include green spaces, such as a 1.5-hectare Healing Forest Garden with open spaces for exercise, community gardening plots, and quiet areas for people to just sit back and enjoy nature. Walking distance to Woodlands South MRT Station.



## WOODLANDS HEALTH CAMPUS

Disclaimer: All images are for illustration purposes and Seeking Indication of Interest only Source: The Straits Times

**Huttons**  
SINGAPORE'S LARGEST  
PRIVATE REAL ESTATE AGENCY



# WOODLANDS REGIONAL CENTRE

Woodlands Regional Centre will introduce new spaces for business, industry, research and development, and learning and innovation across more than 100 hectares of developable land. Set within a vibrant and green landscape that is seamlessly connected to key locations in Singapore and Johor Bahru, it is poised to become the strategic center for the Northern Agri-Tech and Food Corridor. This Corridor will integrate various uses in Singapore's north, linking the future Agri-Food Innovation Park and Woodlands Regional Centre with synergistic elements of the ecosystem in the north, including farms, Republic Polytechnic, and the Senoko Food Zone.

**Woodlands North Coast**  
A unique Waterfront precinct, with lush recreational spaces and a range of business spaces.



Artist's impression of active corridor in Woodlands North Coast Source: URA (Photo: JTC)

**Senoko Food Zone**

## NORTHERN AGRI-TECH AND FOOD CORRIDOR

Farms in Lim Chu Kang

NORTHERN AGRI-TECH AND FOOD CORRIDOR

Agri-Food Innovation Park

Sungei Kadut Eco-District

Woodlands Regional Centre



Artist's impression of North South Corridor Source: LTA

**North South Corridor**  
reduce the traveling time and cost to the City



Artist's impression of active corridor in Woodlands Regional Centre Source: URA (Photo: JTC)

**Woodlands Regional Centre**  
With Grade A offices and Upcoming Integrated Transport Hub



Woodlands Regional Centre URA page

**Huttons**  
SINGAPORE'S LARGEST PRIVATE REAL ESTATE AGENCY



## Schools In Woodlands



### Singapore Sports School

Located at 1 champions Way. Singapore Sports School is the only one in Singapore that provide a World Class Environment that offers selected youth integrated academic and sports programme for both Secondary and post-secondary.



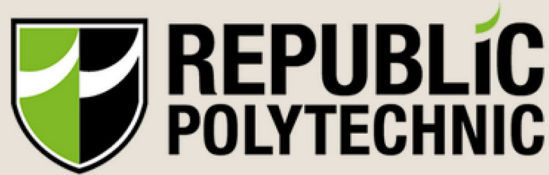
### Singapore American School

Located at Woodlands Street 41. Singapore American School has served the needs of diverse learners since 1956. It is one of the largest International school in Singapore that offers an American-based curriculum from preschool through grade 12. They are known for an unmistakable culture of excellence, extraordinary care, and possibilities.

### Neighbourhood Primary School



Innova Primary School  
Si Ling Primary School  
Woodgrove Primary School  
Woodlands Primary School  
Woodlands Ring Primary School



Located at 9 Woodlands Ave 9. Next to Woodlands North MRT Station. Republic Polytechnic, helps Students to discover their potential, Transform opportunities into realities and Achieve their goals. They have a lively community of about 14,000 students and more than 1,000 staff.



Disclaimer: All images are for illustration purposes and Seeking Indication of Interest only.

# EDUCATION

Nurturing Future Generations.  
Empowering Minds and Shaping the Future

Learning,  
Loving,  
Growing

## Travel By Train



- St Joseph's Institution
- St Joseph's Institution International
- Raffles Institution
- Singapore Chinese Girls School
- Ai Tong

**Huttons**  
SINGAPORE'S LARGEST  
PRIVATE REAL ESTATE AGENCY



There are many Parks in the North that is suitable for people who love Nature Reserves. Woodlands Waterfront Park, Mandai mangrove & Mudflats, Kranji Marches and many more!

# NATURE ATTRACTIONS



Enjoy your day at Mandai Wildlife Reserve. Unforgettable adventure at Mandai awaits! Explore and discover the wonders at Bird Paradise, Singapore Zoo, Night Safari and River Wonders.



**Huttons**  
SINGAPORE'S LARGEST  
PRIVATE REAL ESTATE AGENCY

Disclaimer: All images are for illustration purposes and Seeking Indication of Interest only.



# DISCOVER THE FLOORPLAN



Floorplan Taking Reference from Developer CDL Tembusu Grand Development.  
All floorplan and images is for illustration purposes and Seeking indication of interest only.  
Please note that the Floorplan is not drawn to scale



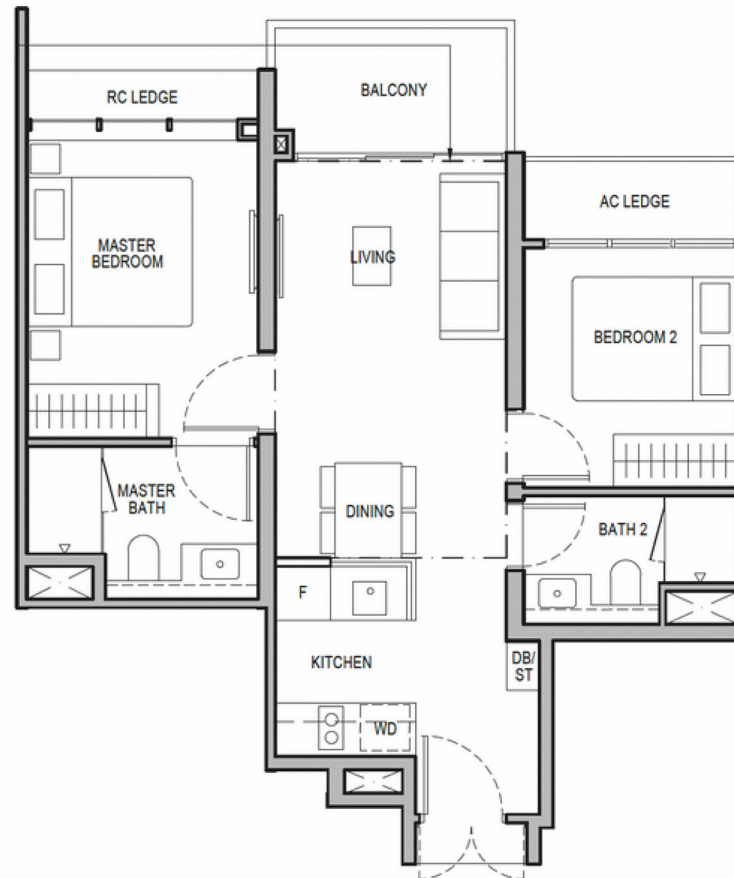
# 1-Bedroom + Study



Floorplan Taking Reference from Developer CDL Tembusu Grand Development.  
All floorplan and images is for illustration purposes and Seeking indication of interest only.  
Please note that the Floorplan is not drawn to scale



## 2-Bedroom



Floorplan Taking Reference from Developer CDL Tembusu Grand Development.  
All floorplan and images is for illustration purposes and Seeking indication of interest only.  
Please note that the Floorplan is not drawn to scale



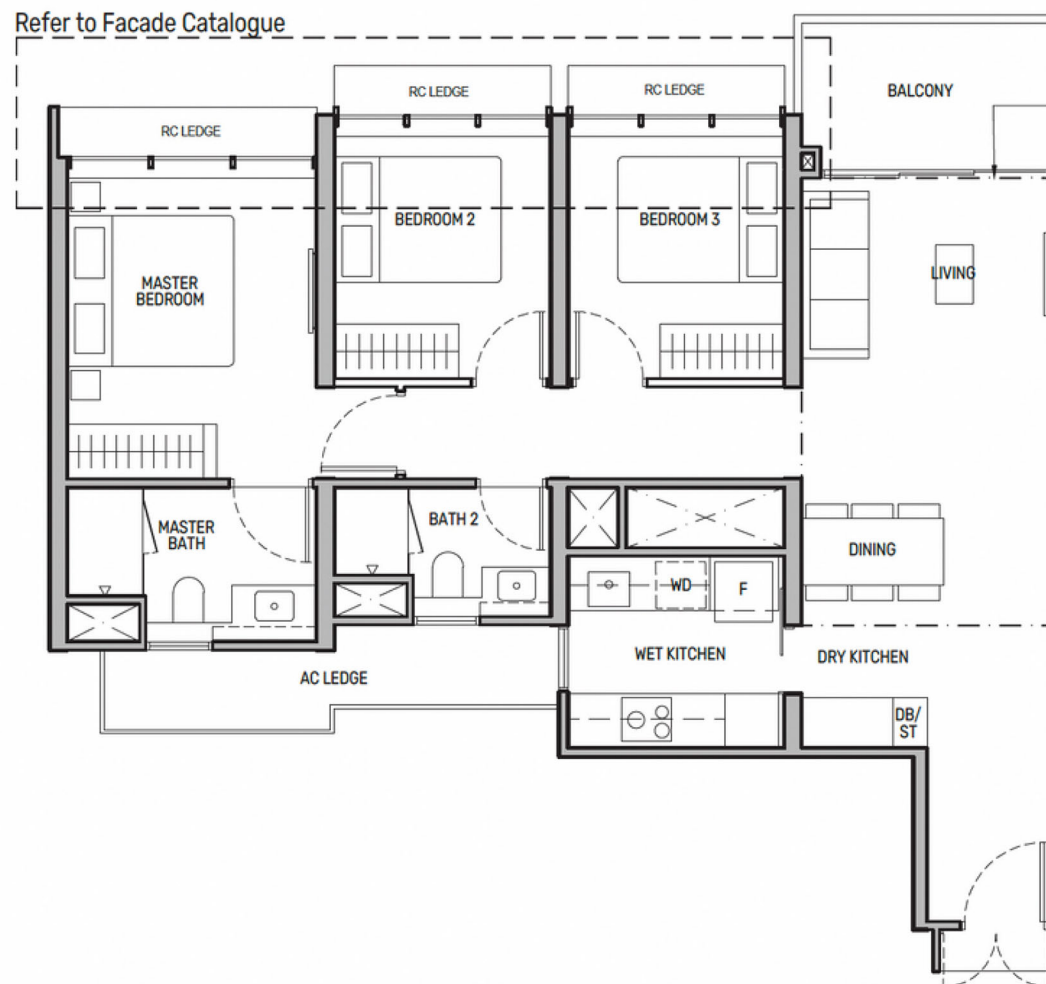
## 2-Bedroom + Study



Floorplan Taking Reference from Developer CDL Tembusu Grand Development.  
All floorplan and images is for illustration purposes and Seeking indication of interest only.  
Please note that the Floorplan is not drawn to scale



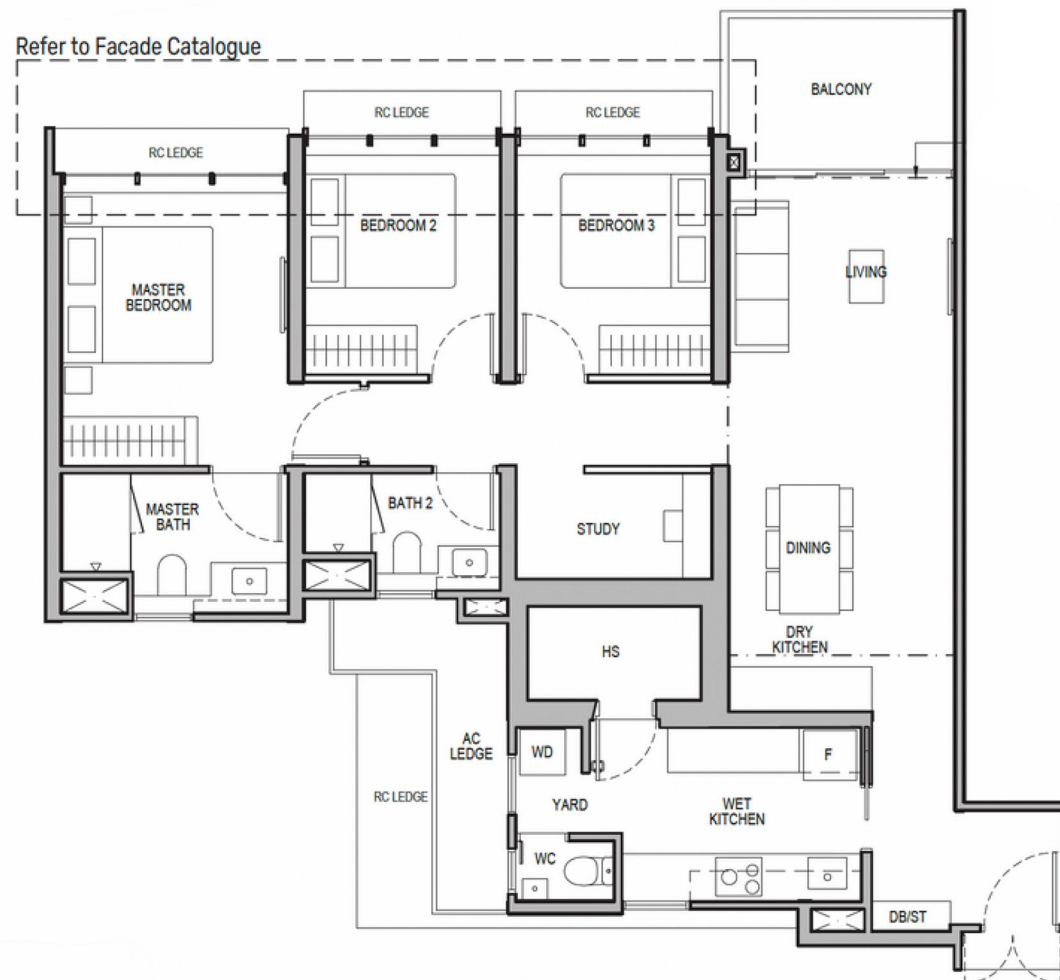
# 3-Bedroom



Floorplan Taking Reference from Developer CDL Tembusu Grand Development.  
All floorplan and images is for illustration purposes and Seeking indication of interest only.  
Please note that the Floorplan is not drawn to scale

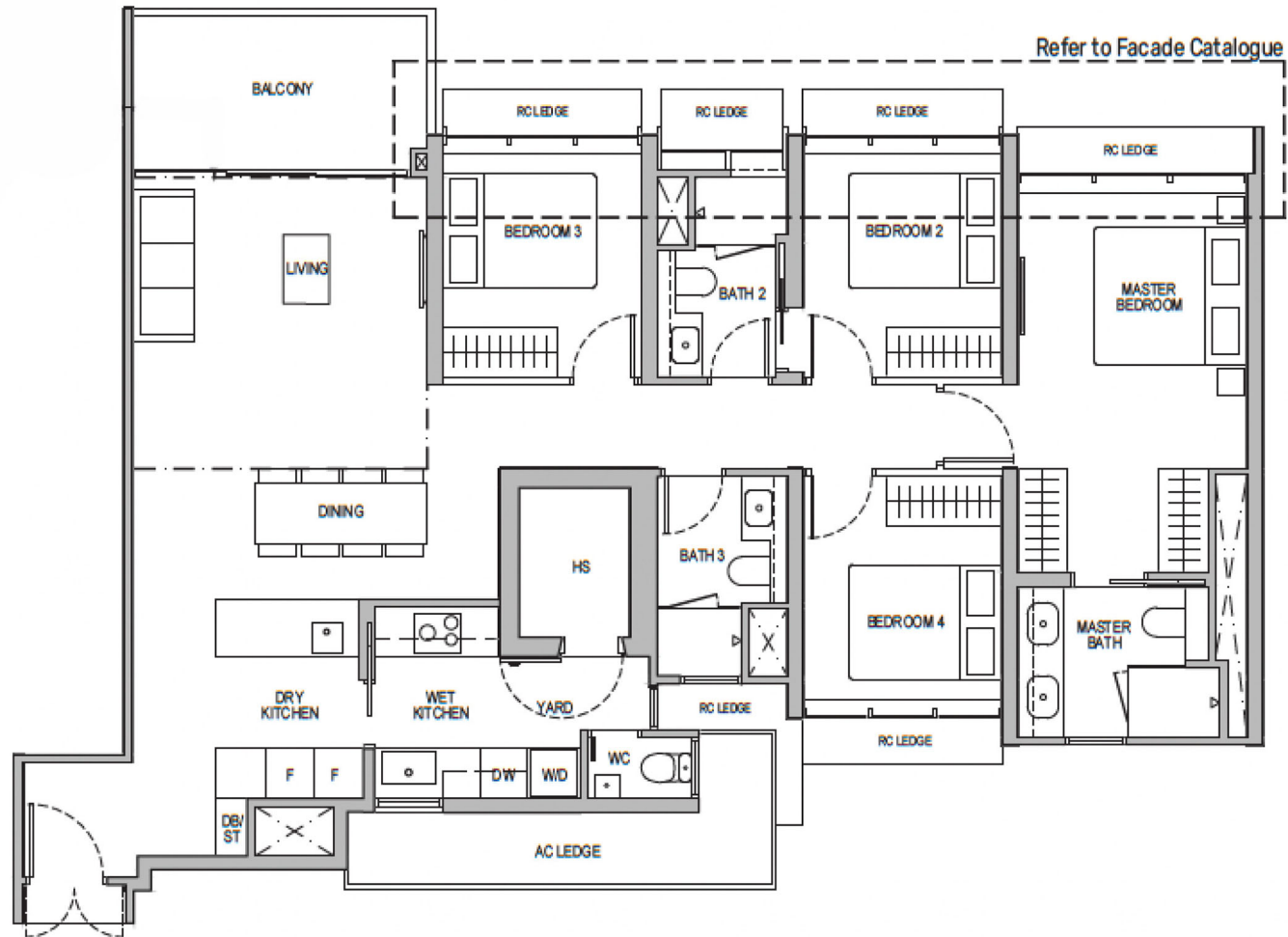


# 3-Bedroom + Study



Floorplan Taking Reference from Developer CDL Tembusu Grand Development.  
All floorplan and images is for illustration purposes and Seeking indication of interest only.  
Please note that the Floorplan is not drawn to scale

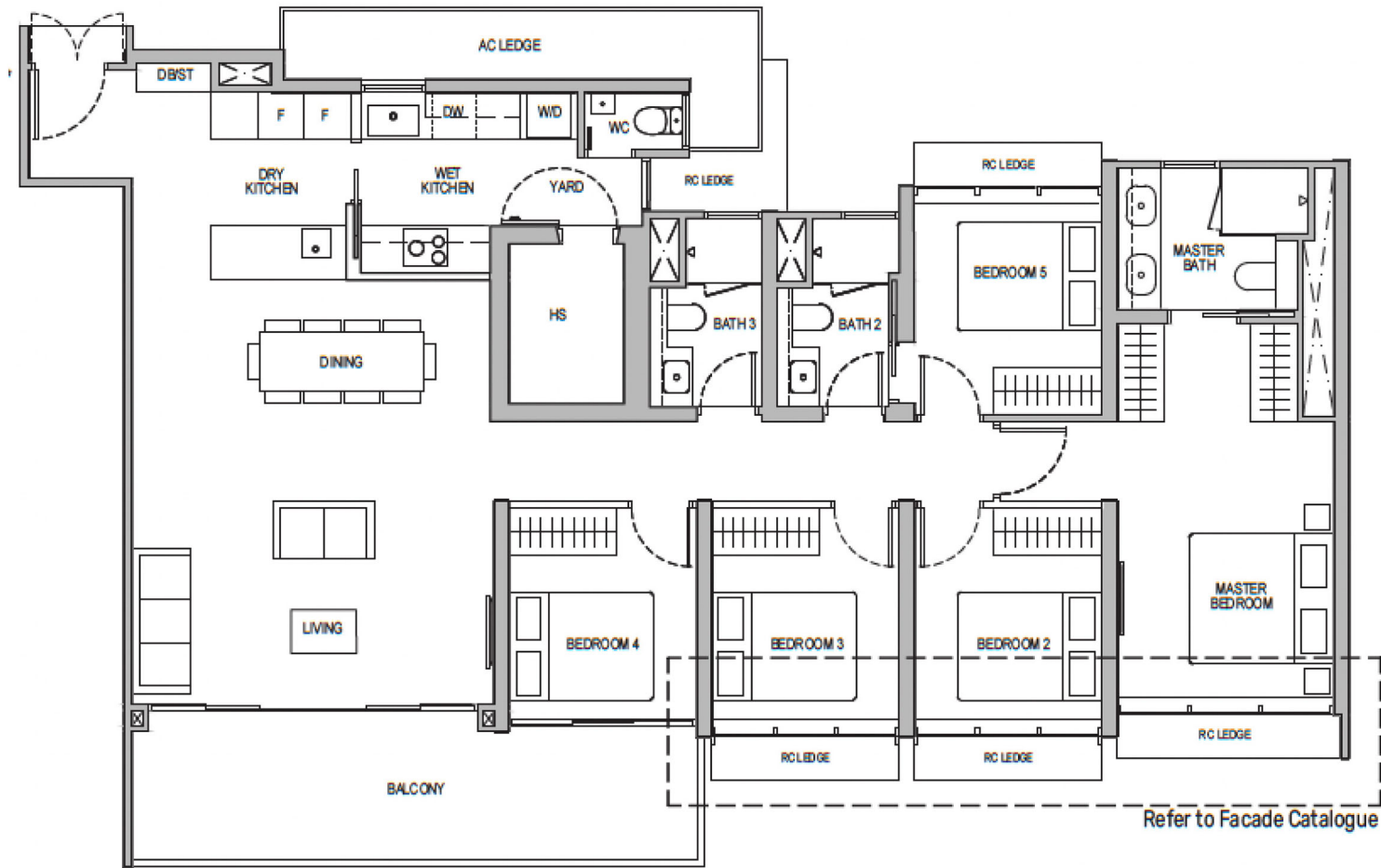
# 4-Bedroom





Floorplan Taking Reference from Developer CDL Tembusu Grand Development.  
All floorplan and images is for illustration purposes and Seeking indication of interest only.  
Please note that the Floorplan is not drawn to scale



# 5-Bedroom



Floorplan Taking Reference from Developer CDL Tembusu Grand Development.  
All floorplan and images is for illustration purposes and Seeking indication of interest only.  
Please note that the Floorplan is not drawn to scale



**Don't miss this Highly  
Desirable Development  
in this Exciting New  
Regional Centre.**

**norwood grand**  
**Huttons**  
SINGAPORE'S LARGEST  
PRIVATE REAL ESTATE AGENCY

Contact your preferred Huttons Associate to register for the VWIP Preview now!



**ADEN PANG**  
R000885D  
**98635846**

**Disclaimer**

While Huttons has endeavoured to ensure that the information and materials contained herein are accurate and up to date as at 31 Jul 2024, Huttons is not responsible for any errors or omissions, or for the results obtained from their use or the reliance placed on them. All information is provided "as is", with no guarantee of completeness, and accuracy. In no event will Huttons and/or salespersons thereof be liable in contract or in tort, to any party for any decision made or action taken in reliance on the information in this presentation/document or for any direct, indirect, consequential, special or similar damages. Past performance or any prediction or forecast is not necessarily indicative of future performance.

Huttons collects and collates public information from sources that include user input, real estate professionals, retail business, and government agencies that include Urban Redevelopment Authority (URA), Singapore Land Authority (SLA), Singapore Department of Statistics, etc. We do not alter or manipulate the accuracy of that data when we conduct analysis or present information herein. To the best of our knowledge, the raw data and analytical output are accurate, but no decision should be made solely on these numbers. Property investments are subject to risks, including possible loss of principal amount invested. The value of properties may fall or rise. Past performance or any prediction or forecast is not necessarily indicative of future performance.

Services rendered by Huttons do not constitute and shall not be construed as constituting investment advice or recommendations and are prepared without regard to the specific objectives, financial situations or needs of any particular person who may receive or use the services or our site [www.huttonsgroup.com](http://www.huttonsgroup.com), or this e-book. Investors should study all relevant information and consider whether the investment is appropriate for them. You should seek the advice of your financial, property, and legal advisors before purchasing, renting, or selling property. Your purchase and investment decisions are solely your responsibility.

