



THE
Chuan Park

The Home That You Have Been Waiting For

Garden Home

of the city

Welcome to The Chuan Park, where nature meets luxury. Step into a tranquil sanctuary and experience nature's symphony. At The Chuan Park, indulge in the perfect blend of elegance and outdoor charm.

Developed by Kingsford Development (Singapore), The Chuan Park benefits from a developer with a proven track record in mega-developments. Kingsford Development boasts an extensive portfolio of residential projects both locally and internationally.



Disclaimer: All images and floor plans are for illustration purposes only.

New Beginning



ARTIST'S IMPRESSION FROM NORMANTON PARK

2

The Chuan Park is a 99-year leasehold development in Lorong Chuan area, next to the Lorong Chuan MRT and New Tech Park. The Chuan Park comprises a total of 916 units ranging from 2 to 5-bedroom layouts.

Connecting YOU TO ALL THE ESSENTIALS OF LIFE



3

For shopping and eating out, The Chuan Park residents will find themselves in close proximity to two major shopping malls: Nex and Junction 8.

The first is a large mall with 340 stores, and it is integrated with the Serangoon MRT station and bus interchange.

The second mall is a smaller heartland mall with about 174 stores, and is accessible by bus.

- Prime central location
- Seamless connectivity to all parts of Singapore
- Luxury living with plethora of facilities



Hawker Centres



*Next To
Lorong Chuan MRT*



*Proximity To
Essential Amenities*

In its vicinity are hawker centers such as Chomp Chomp Food Centre, Serangoon Garden Market and Food Centre as well as neighborhood cafes and bars.

Within 1km to 3 primary schools, St Gabriel's Primary School, Yangzheng Primary School, CHIJ Our Lady of Good Counsel.



Near SJI, Nanyang JC, St Andrew JC, Stamford Amercian International School

Schools

Disclaimer: All images and floor plans are for illustration purposes only.

-Panoramic Views-



Experience breathtaking panoramic views at The Chuan Park condo. Enjoy sweeping vistas of the city skyline from your home, creating a serene and picturesque living environment. Discover the beauty of elevated living at The Chuan Park.

EVERY *Arrival* IS A GRAND SETTING



ARTIST'S IMPRESSION FROM NORMANTON PARK

At The Chuan Park, every day is a getaway embraced with plenty of lifestyle facilities. Take a stroll at amazo valley; enjoy a mindful moment at zen garden; gather for a meal at dining by the woods; sweat it out at botanical outdoor fitness. Live life to the fullest within your home.

Discover

ALL THAT THE GARDENS HAVE TO OFFER



Break of dawn, rise and shine! Channel inner peace with a yoga session at the floating boardwalk or island lawn.

Make a splash at the free-form swimming pools or shave your timings at the 50-metre lap pool.



Too hot out for a jog round the gardens? Work out in air-conditioned comfort at the floating gym .

Nice weather for dinner outdoor? Take your pick of settings; the alfresco kitchen or the island bbq.



**DESIGNED ELEGANTLY,
FURNISHED WITH**

style



-Cosy feel-



Emphasizing efficient design and elegant furnishing at The Chuan Park, meticulously planned interiors can quickly transform a house into a warm and welcoming home. Craft unforgettable family memories with a practical spatial arrangement and enjoy fittings with high-quality home appliances and fixtures.

FLOOR PLAN

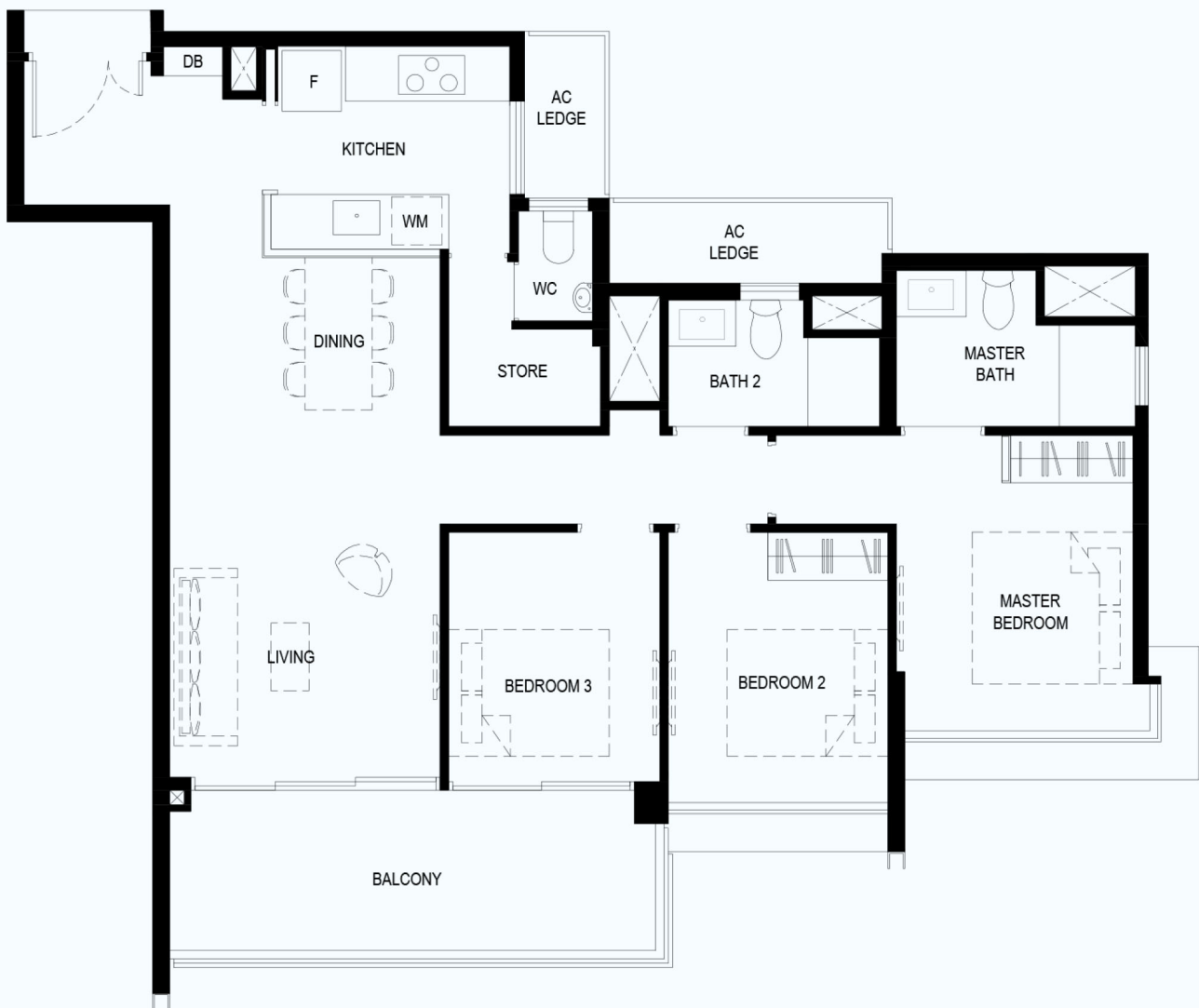
Disclaimer: All images and floor plans are for illustration purposes only.

2 BEDROOM



Sample Floor Plan From Normanton Park
Floor Plans Not Drawn To Scale

3 BEDROOM



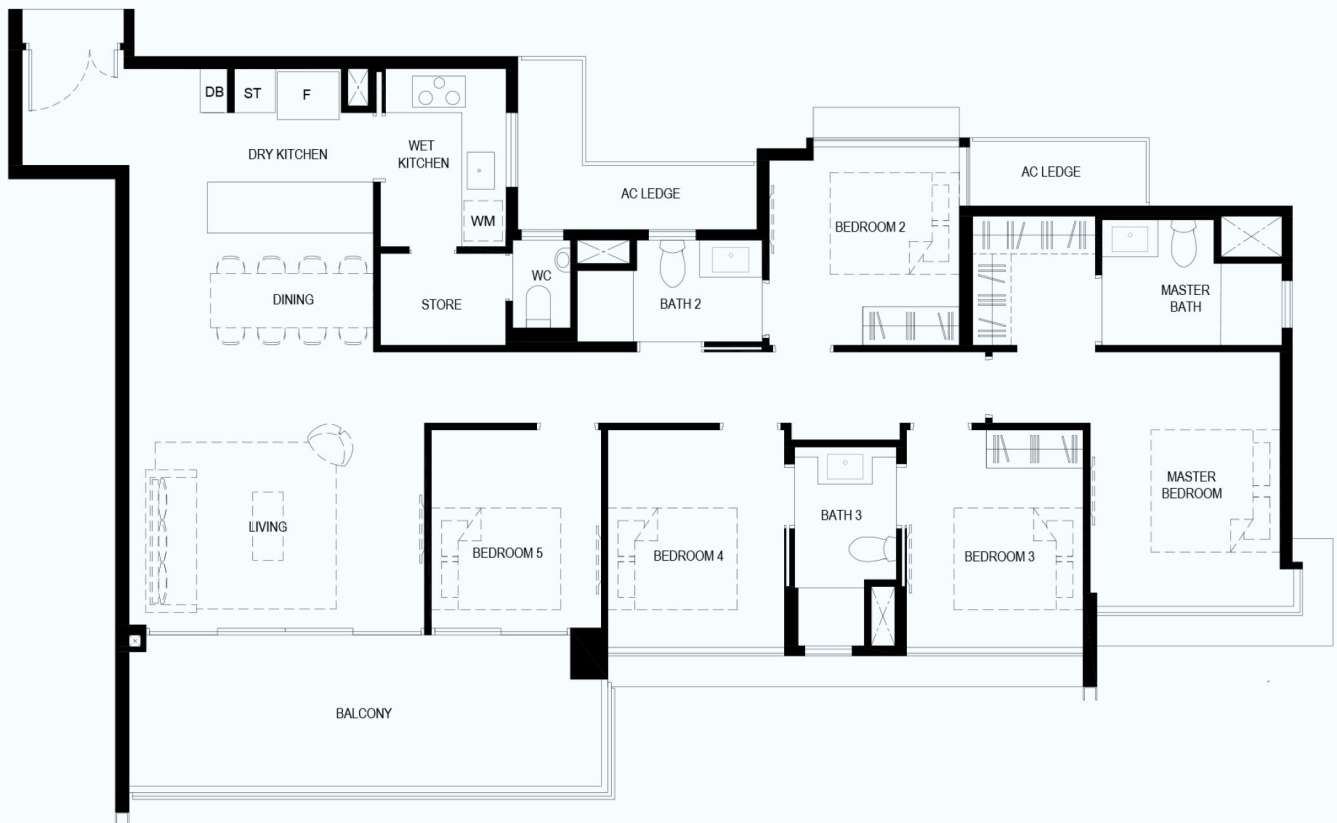
Sample Floor Plan From Normanton Park
Floor Plans Not Drawn To Scale

4 BEDROOM



Sample Floor Plan From Normanton Park
Floor Plans Not Drawn To Scale

5 BEDROOM



Sample Floor Plan From Normanton Park
Floor Plans Not Drawn To Scale



Normanton Park
Artist's impression



KINGSFORD

鑫丰地产

In 2011, Kingsford Development was established in Singapore to engage in property development.

To date, Kingsford Development has completed the 512-unit Kingsford Hillview Peak at Hillview Avenue, 1,165-unit Kingsford Waterbay at Upper Serangoon View and 1,862-unit Normanton Park at Normanton Park.

Ongoing development projects include the 142-unit The Hill @ One-North, redevelopment of the existing Chuan Park and a waterfront condominium at Marina Gardens Lane.

Kingsford Development won the Singapore Prestige Brand Award – Global Brands in 2019, as well as Best Mega-Scale Condo Development and Best Mega-Scale Condo Landscape Architectural Design for Normanton Park at the PropertyGuru Asia Property Awards (Singapore) in 2021.



Kingsford Hillview Peak
Artist's impression

Kingsford Waterbay
Artist's impression

CALL NOW

ADEN PANG

98635846

CEA NO.: R000885D



SEEKING INDICATION OF INTEREST

DISCLAIMER

Huttons Asia collects and collates public information from sources that include user input, real estate professionals, retail businesses, and government agencies include URA, SLA, Singapore Statistics, etc. We do not alter or manipulate the accuracy of that data when it conducts analysis or presents information in its Services. To the best of our knowledge, the raw data and analytical output are accurate, but no decision should be made solely on these numbers. Property investments are subject to risks, including possible loss of principal amount invested. The value of properties may fall or rise. Past performance or any prediction or forecast is not necessarily indicative of future performance. Services rendered by Huttons Asia do not constitute and shall not be construed as constituting investment advice or recommendations and are prepared without regard to the specific objectives, financial situations or needs of any particular person who may receive or use the Services or Site. Investors should study all relevant information and consider whether the investment is appropriate for them. You should seek the advice of your financial, property, and legal advisors before purchasing, renting, or selling property. If you are using information from Huttons Asia to make decisions regarding the purchase of goods or services from a retail business marketing on Huttons Asia, you should thoroughly consider all your options or alternatives. Your purchase and investment decisions are solely your responsibility.

While Huttons has endeavoured to ensure that the information and materials contained herein are accurate and up to date as at [20/07/2024], Huttons is not responsible for any errors or omissions, or for the results obtained from their use or the reliance placed on them. All information is provided "as is", with no guarantee of completeness, and accuracy. In no event will Huttons and/or salespersons thereof be liable in contract or in tort, to any party for any decision made or action taken in reliance on the information in this document or for any direct, indirect, consequential, special or similar damages.

Follow us on social media



OFFICIAL MARKETING AGENCY

Huttons

**SINGAPORE'S LARGEST
PRIVATE REAL ESTATE AGENCY**

ESTATE AGENT LICENCE NO.: L3008899K